

4,400 SQ FT AVAILABLE
For Lease



Westport Road - Just West of State Line Road
1913 - 1915 W. 43rd Street, Kansas City, Kansas



Estimated Population
279,005

Average Household Income
\$56,103

Five Mile Radius

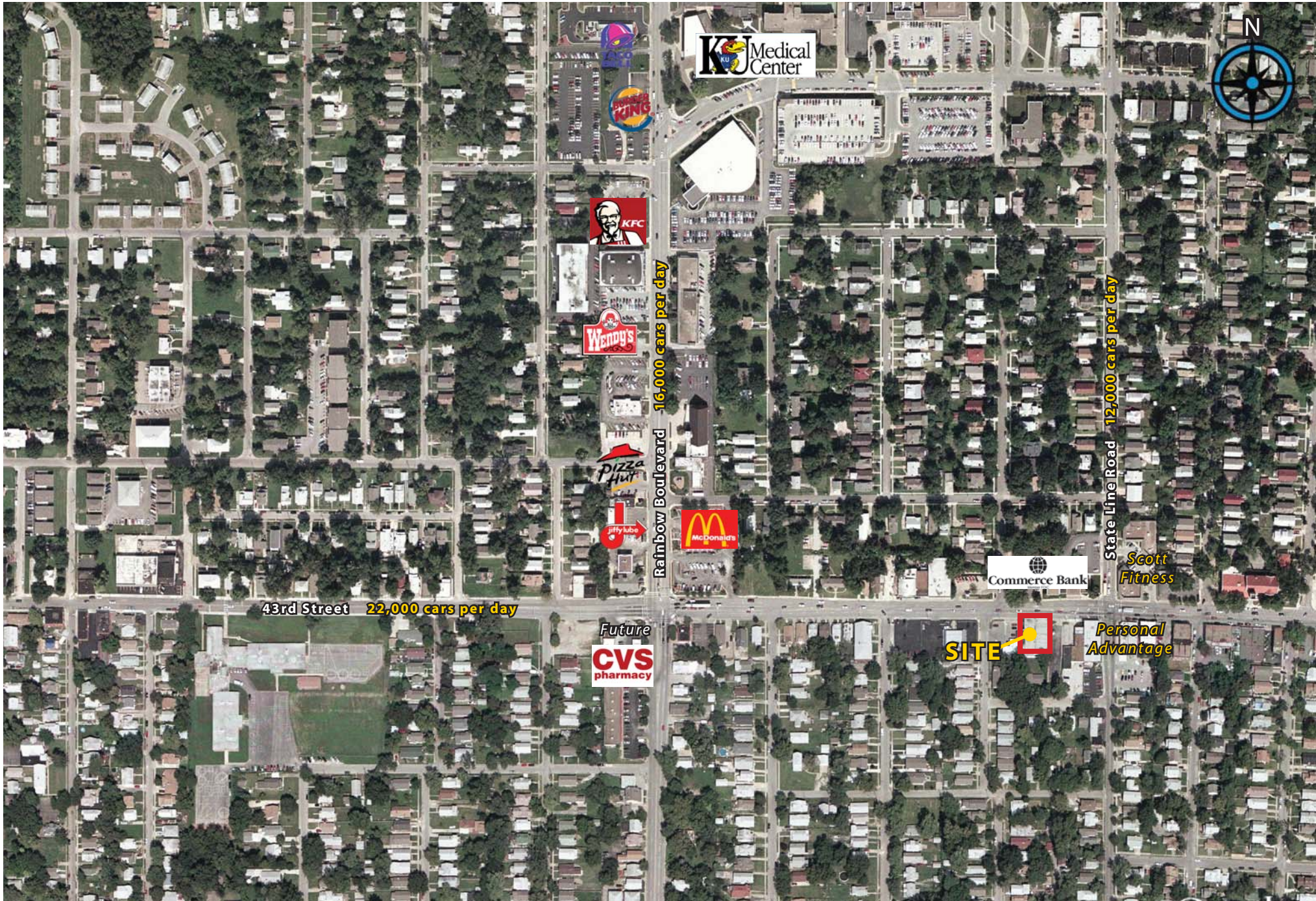
- Zoned C-1
- 16 car parking
- Drive-in doors
- 12 foot high ceiling
- State Line Road & 43rd Street carry over 34,000 cars per day

BLOCK & COMPANY, INC., Realtors 816.753.6000
In the Skelly Building on the Country Club Plaza
605 West 47th Street, Suite 200, Kansas City, Missouri 64112

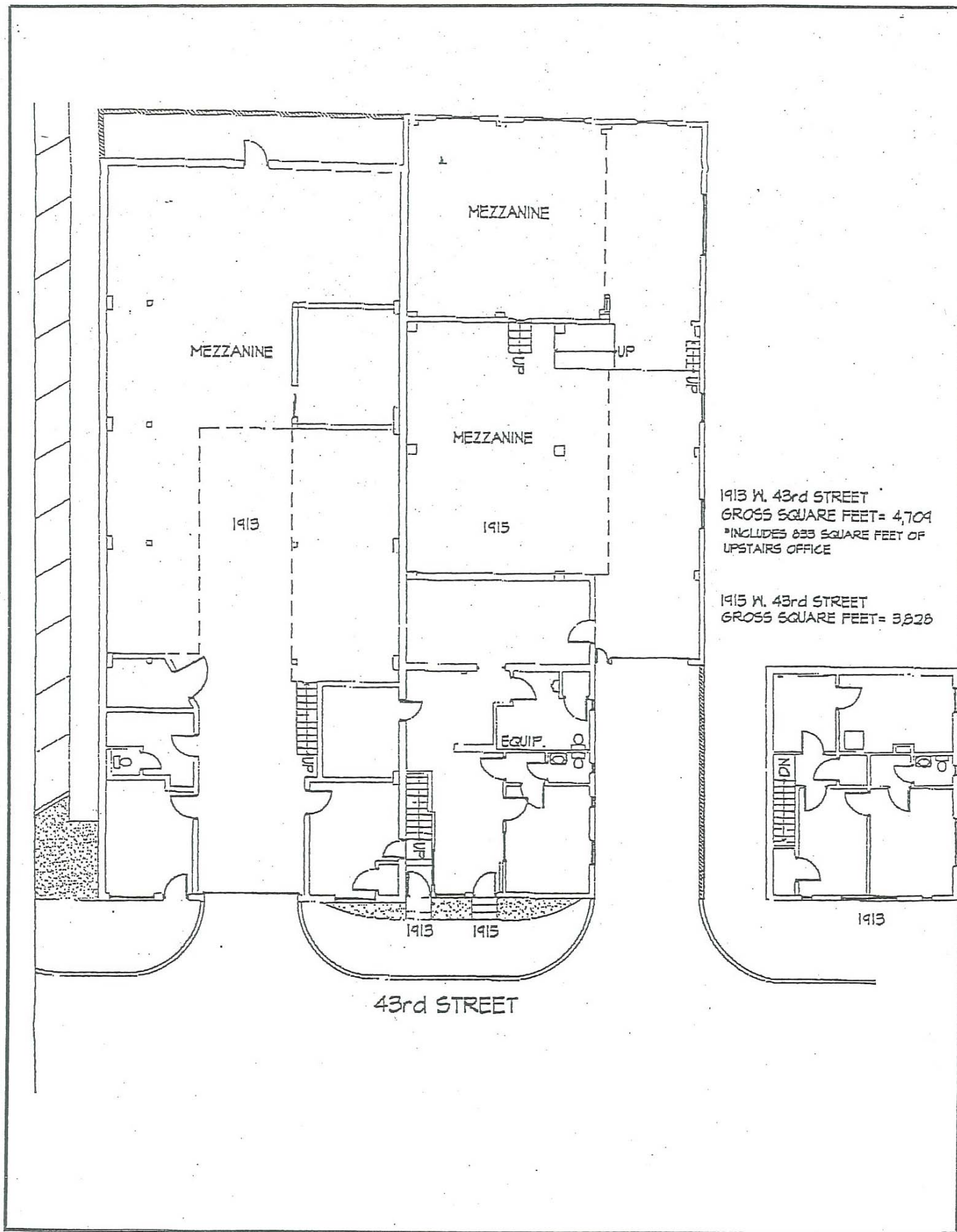
For Information Contact:

Max Kosoglad
816.412.7363
mkosoglad@blockandco.com

1905 W. 43rd Street, Kansas City, Kansas



1913 - 1915 W. 43rd Street, Kansas City, Kansas



Lat: 39.0508 Lon: -94.6089 Zoom: 11 mi Logos are for identification purposes only and may be trademarks of their respective companies.



©2009, SITES USA Inc., Chandler, AZ (480) 491-1112. All Rights Reserved.

1913 - 1915 W. 43rd Street Kansas City, Kansas

May 2009

This map was produced using data from private and government sources deemed to be reliable. The information herein is provided without representation or warranty.



SUMMARY DEMOGRAPHIC PROFILE

1990 - 2000 Census, 2006 Estimates & 2011 Projections

Calculated using Proportional Block Groups

Lat/Lon: 39.050177/-94.608094

May 2009

RS1

1913 - 1915 W. 43rd Street Kansas City, Kansas		1.00 mi radius	3.00 mi radius	5.00 mi radius
POPULATION	2006 Estimated Population	18,424	110,174	279,005
	2011 Projected Population	18,381	110,119	278,510
	2000 Census Population	18,512	110,714	280,685
	1990 Census Population	18,730	119,634	300,475
	Historical Annual Growth 1990 to 2006	-0.1%	-0.5%	-0.4%
	Projected Annual Growth 2006 to 2011	-0.0%	-0.0%	-0.0%
	2006 Median Age	32.9	34.2	34.5
HOUSEHOLDS	2006 Estimated Households	10,409	51,726	120,984
	2011 Projected Households	10,516	52,274	122,248
	2000 Census Households	10,283	51,262	119,894
	1990 Census Households	10,269	53,979	125,640
	Historical Annual Growth 1990 to 2006	0.1%	-0.3%	-0.2%
	Projected Annual Growth 2006 to 2011	0.2%	0.2%	0.2%
POPULATION BY RACE	2006 Estimated White	78.0%	65.2%	56.6%
	2006 Estimated Black or African American	9.9%	24.6%	33.6%
	2006 Estimated Asian & Pacific Islander	3.3%	2.5%	2.3%
	2006 Estimated American Indian & Native Alaskan	0.5%	0.4%	0.5%
	2006 Estimated Other Races	8.2%	7.1%	7.1%
	2006 Estimated Hispanic	19.7%	15.3%	15.3%
INCOME	2006 Estimated Average Household Income	\$ 47,256	\$ 63,841	\$ 56,103
	2006 Estimated Median Household Income	\$ 38,108	\$ 48,688	\$ 44,801
	2006 Estimated Per Capita Income	\$ 27,215	\$ 30,601	\$ 25,285
EDUCATION (AGE 25+)	2006 Elementary	1.4%	2.1%	2.8%
	2006 Some High School	5.5%	7.1%	9.0%
	2006 High School Graduate	19.2%	20.9%	24.9%
	2006 Some College	20.1%	20.5%	21.7%
	2006 Associates Degree Only	7.5%	7.2%	7.5%
	2006 Bachelors Degree Only	30.5%	25.2%	21.1%
	2006 Graduate Degree	15.7%	16.9%	12.9%
BUSINESS	Number of Businesses	1,882	7,096	16,570
	Total Number of Employees	25,561	121,351	272,673
	Employee Population per Business	13.6	17.1	16.5
	Residential Population per Business	9.8	15.5	16.8

This report was produced using data from private and government sources deemed to be reliable. The information herein is provided without representation or warranty.